

SURVEYING & SPATIAL INFORMATION REGULATION 2012 CLAUSE 61(2)

MARK	EASTING	NORTHING	CLASS	ORDER	METHOD
XXXXXX	XXXXXX	XXXXXX	B	2	SCIMS
XXXXXX	XXXXXX	XXXXXX	B	2	"
XXXXXX	XXXXXX	XXXXXX	B	2	"
XXXXXX	XXXXXX	XXXXXX	B	2	CADASTRAL
XXXXXX	XXXXXX	XXXXXX	C	3	TRAVERSE

COMBINED SEA LEVEL AND SCALE FACTOR 0.999985
SOURCE M.G.A. CO ORDINATES ADOPTED FOR ESTABLISHED MARKS FROM S.C.I.M.S. MAY, 2008.

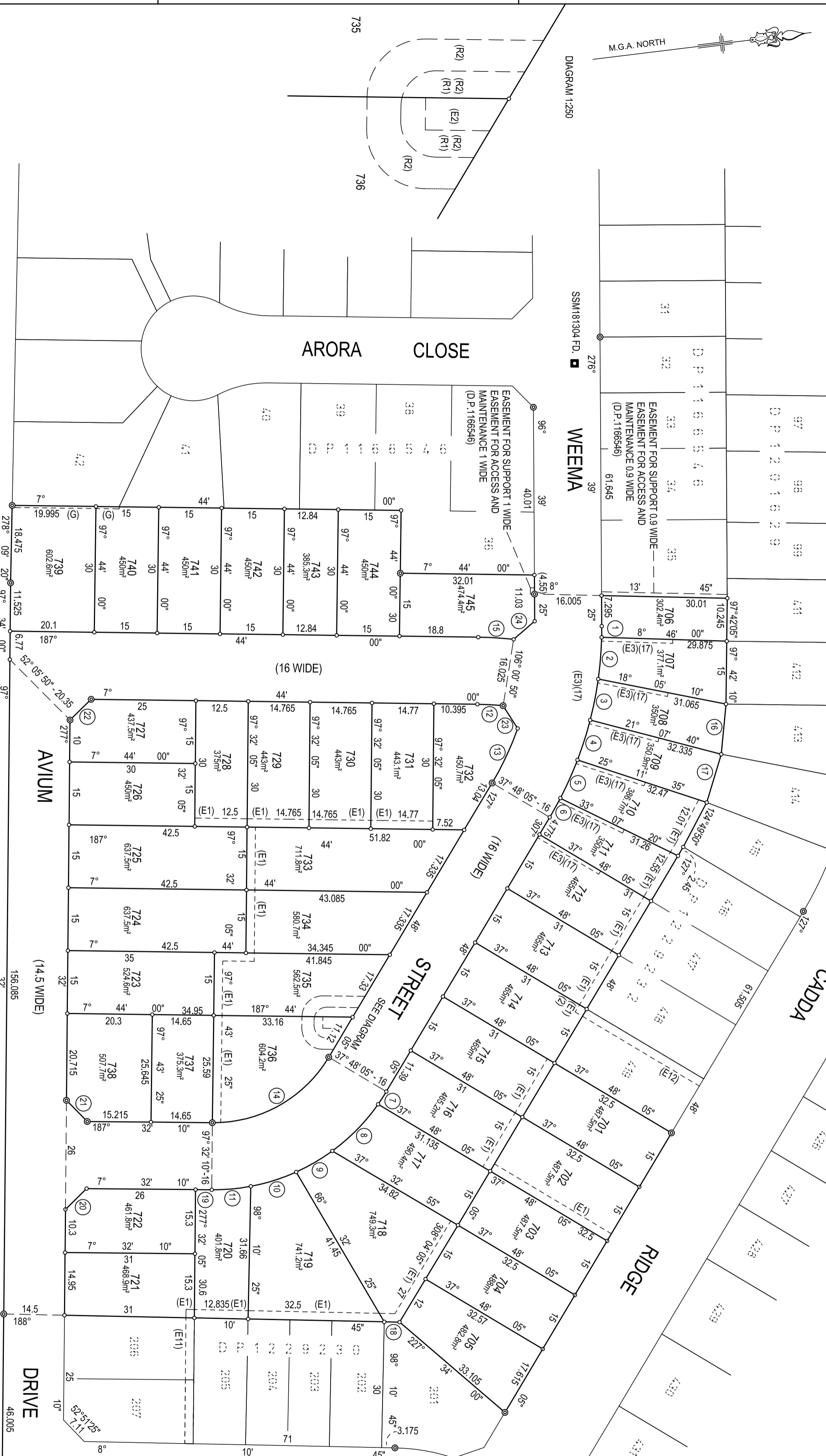
- (E1) EASEMENT TO DRAIN WATER 2 WIDE (D.P.1229230)
- (E1) EASEMENT TO DRAIN WATER 2 WIDE
- (E2) EASEMENT FOR PADMOUNT SUBSTATION 2.75 WIDE
- (E2) EASEMENT TO DRAIN WATER 2 WIDE (D.P.1229232)
- (G) EASEMENT FOR SUPPORT 0.5 WIDE (D.P.1166546)
- (R1) RESTRICTION ON THE USE OF LAND
- (R2) RESTRICTION ON THE USE OF LAND
- (E3) EASEMENT FOR ACCESS AND MAINTENANCE 0.9 WIDE

SCHEDULE OF CURVED BOUNDARIES

No	Bearing	Chord	Ac	Radius	No	Bearing	Chord	Ac	Radius
1	277°31'50"	2.67	2.67	88	9	336°46'50"	9.98	9.995	48
2	281°39'05"	9.98	9.985	88	10	349°32'25"	11.355	11.385	48
3	288°14'10"	10.235	10.245	88	11	1°56'05"	9.37	9.385	48
4	294°44'05"	9.715	9.72	88	12	10°10'50"	6.15	6.155	72
5	301°08'55"	9.975	9.98	88	13	122°05'15"	14.36	14.36	72
6	306°05'55"	5.23	5.23	88	14	157°40'05"	31.87	33.365	32
7	309°57'35"	3.615	3.615	48	15	190°29'20"	8.46	8.465	88
8	321°27'55"	15.995	15.995	48					

SCHEDULE OF LINES

No	Bearing	Distance
16	102°21'40"	12.015
17	113°47'45"	12.01
18	188°10'45"	3.665
19	7°32'10"	3.885
20	322°32'10"	7.07
21	232°32'05"	7.07
22	322°38'00"	7.06
23	64°30'05"	6.445
24	146°19'35"	6.62



DRAFT 27.03.19
DIMENSIONS AND AREAS
ARE SUBJECT TO FINAL SURVEY

Surveyor: Ian Vincent Myers
Vince Morgan Surveyors
Ph. 47215293 email: imyers@vmsurvey.com.au
Date of Survey: xxxxxxxx
Surveyor's Reference: 204677C

PLAN OF SUBDIVISION OF
LOT 500 D.P.1229232,
LOT 72 D.P.1166546 AND
LOT 3 D.P.502333

LGA: PENRITH
Locality: CADDENS
Subdivision No.:

Registered:

D.P.1248687

10 20 30 40 50 60 70 80 90 100 110 120 130 140